



---

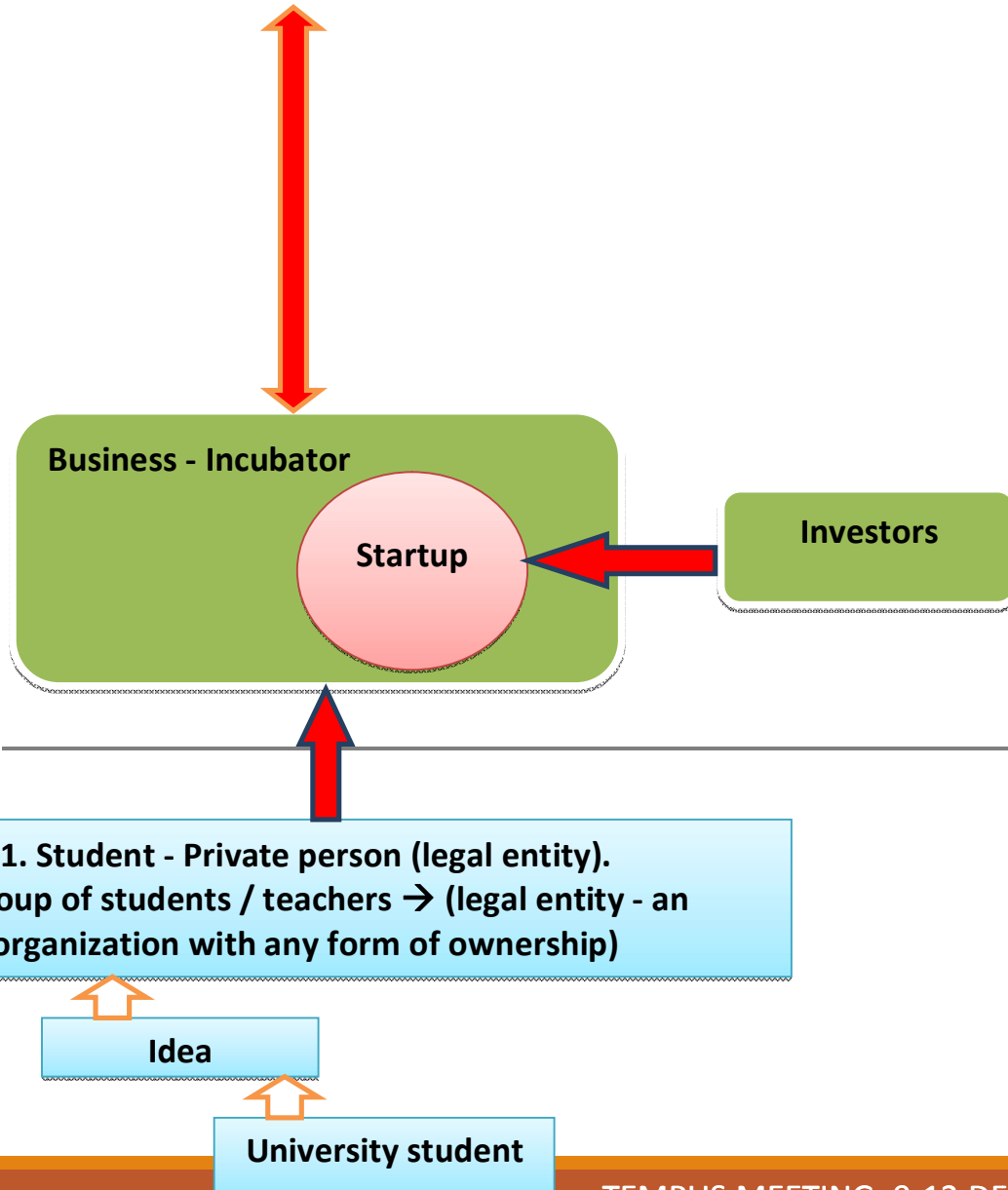
# WP 3.1 Report - Frameworks for student innovation in universities

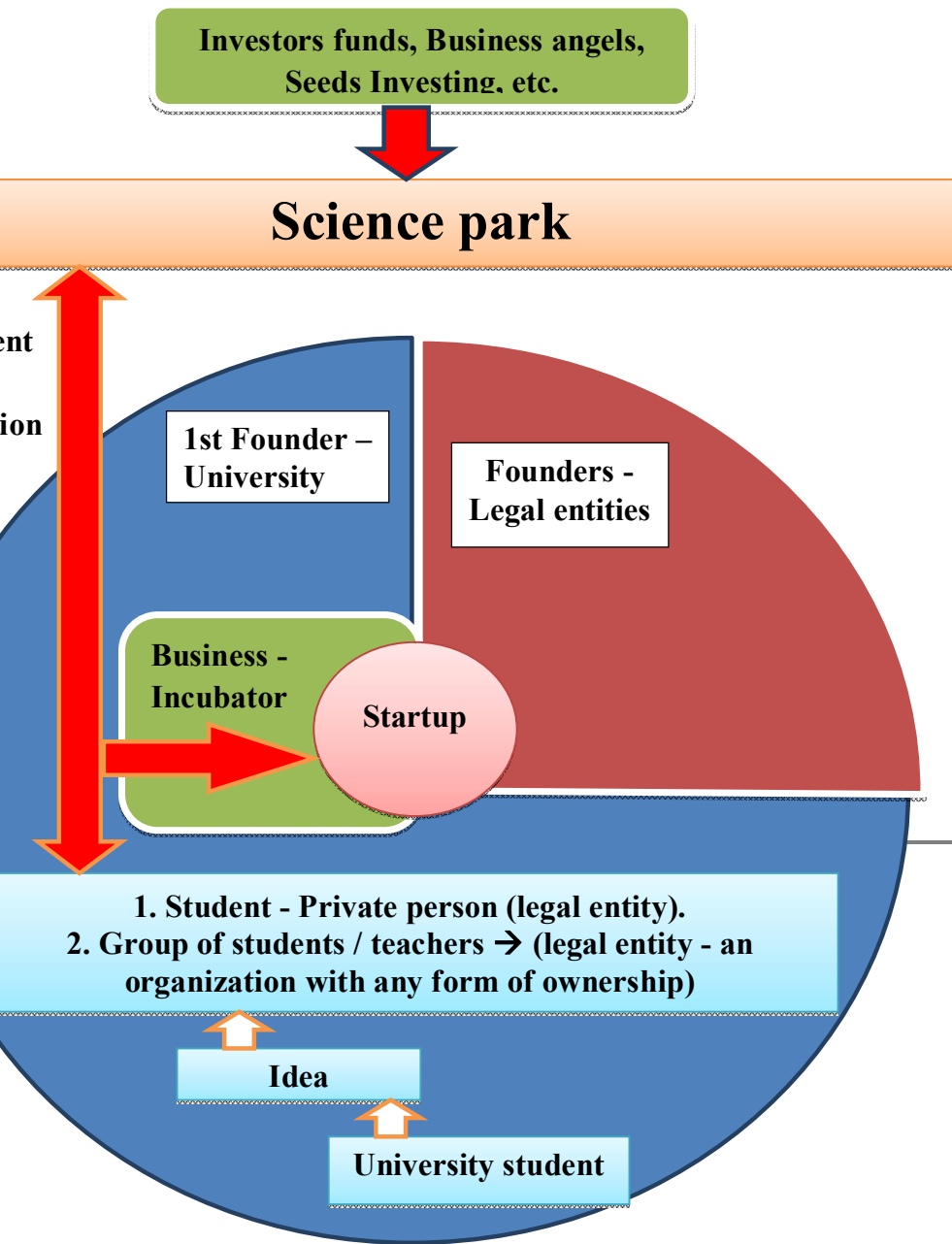
## Current status

Science park

# MODEL SP-ISU

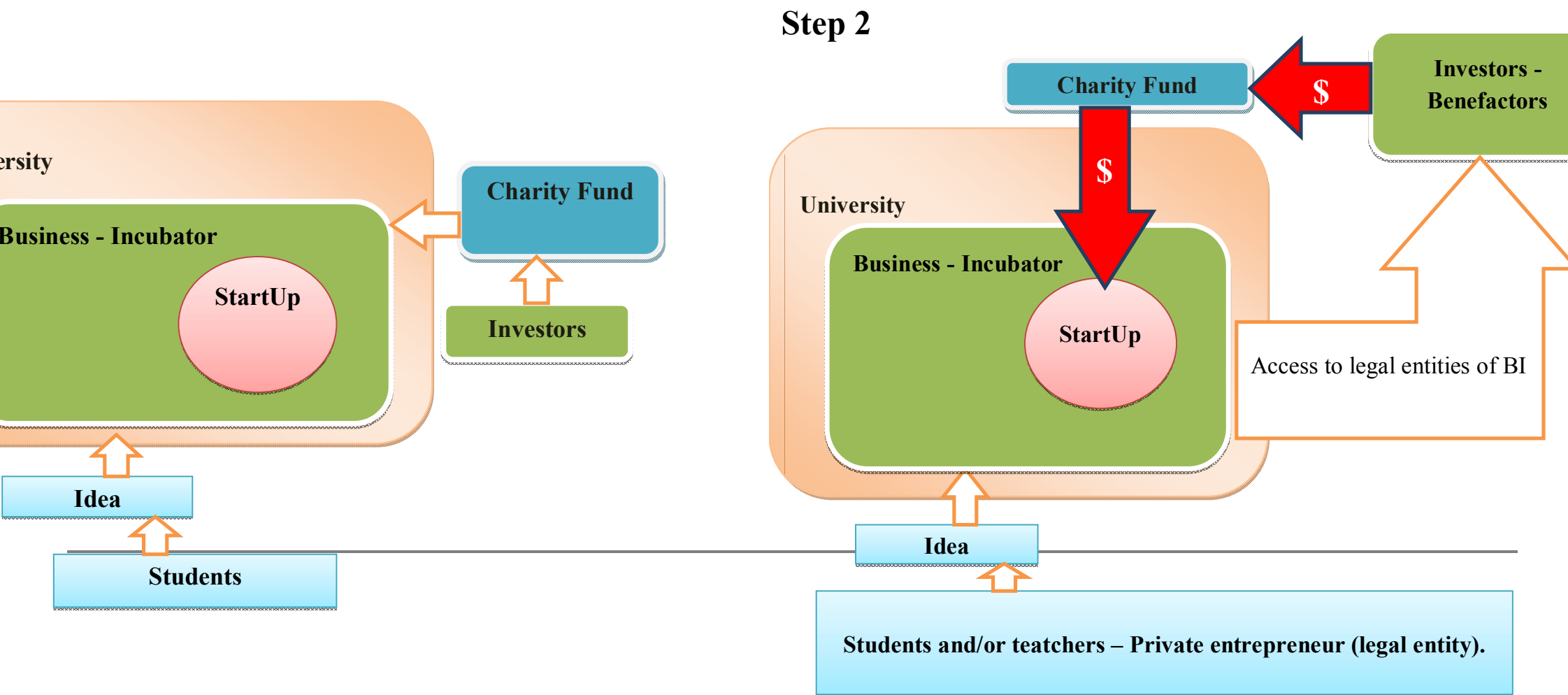
KNURE 1 -Science park  
- Innovative structure -  
University





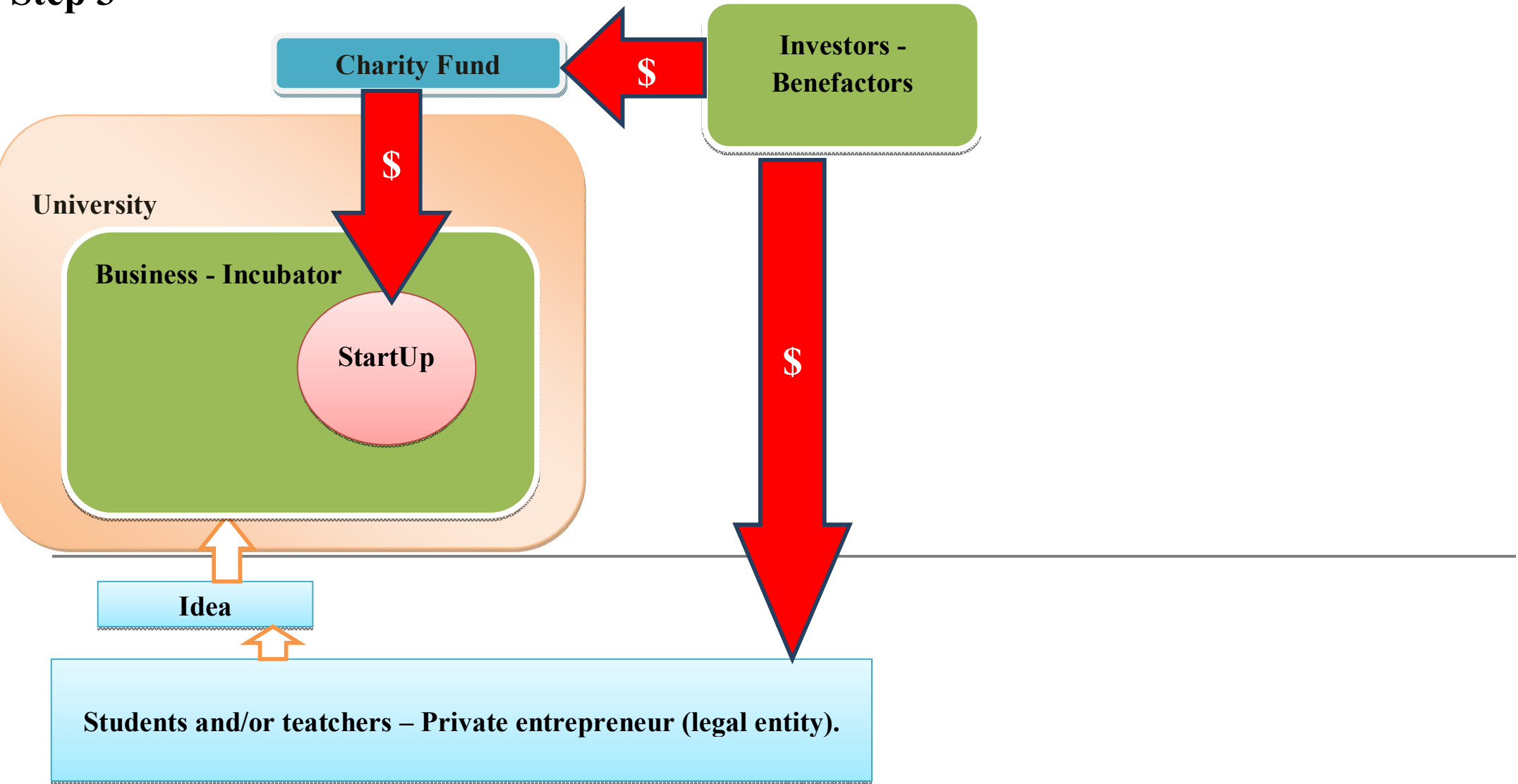
# MODEL SP-ISpU

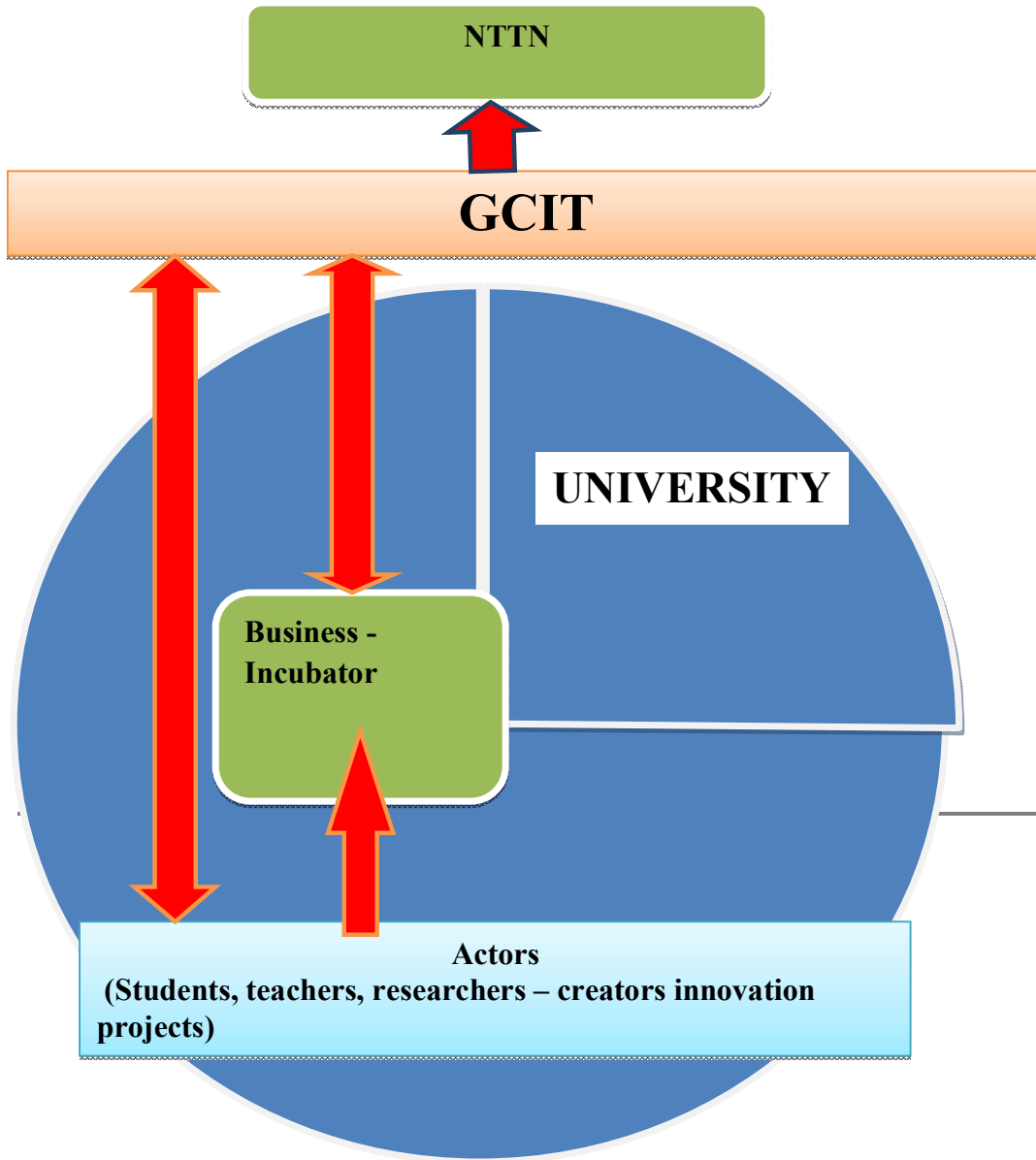
## KNURE 2 - *Science park - Innovative structure - University*



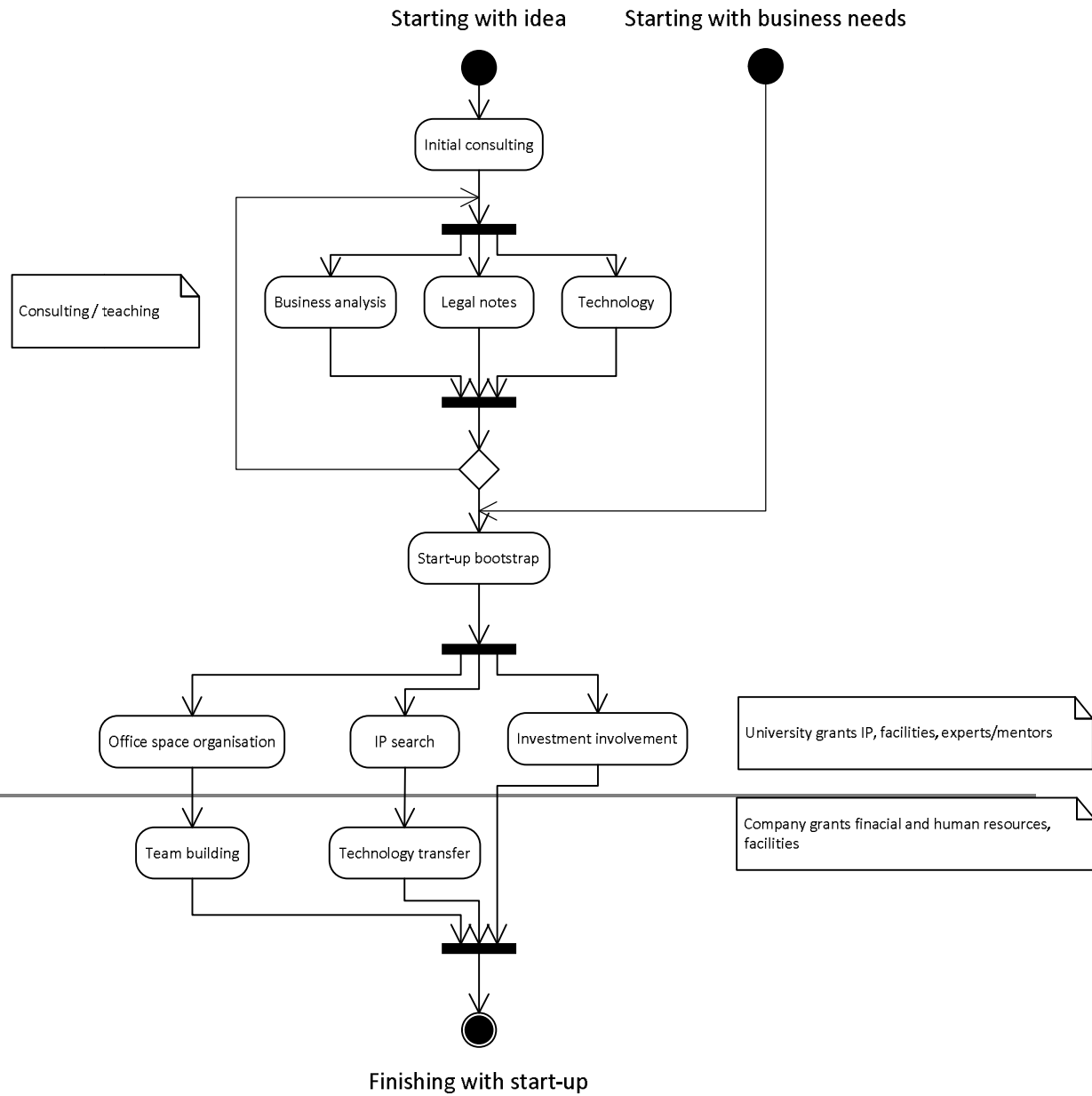
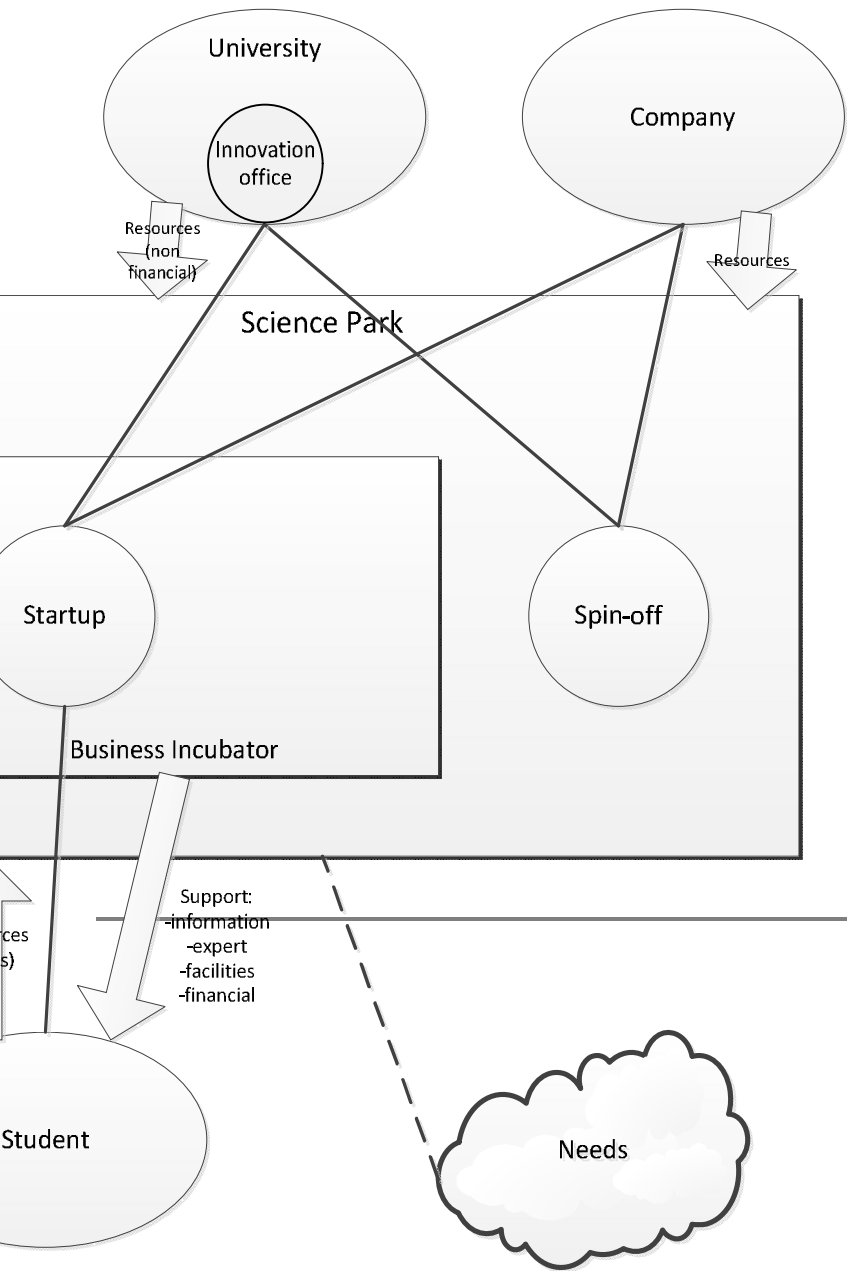
# MODEL CSU – Crowd funding startup in University

### Step 3





# KNURE 4



Sources of financing:  
International grants.  
Budget money.  
Investor money.  
Money of other interested persons in the project.

Sources of self-financing:  
Money of a project members.  
Money from main activities of BI.  
Money from profits of other organizations.

Srvices

BI in the University

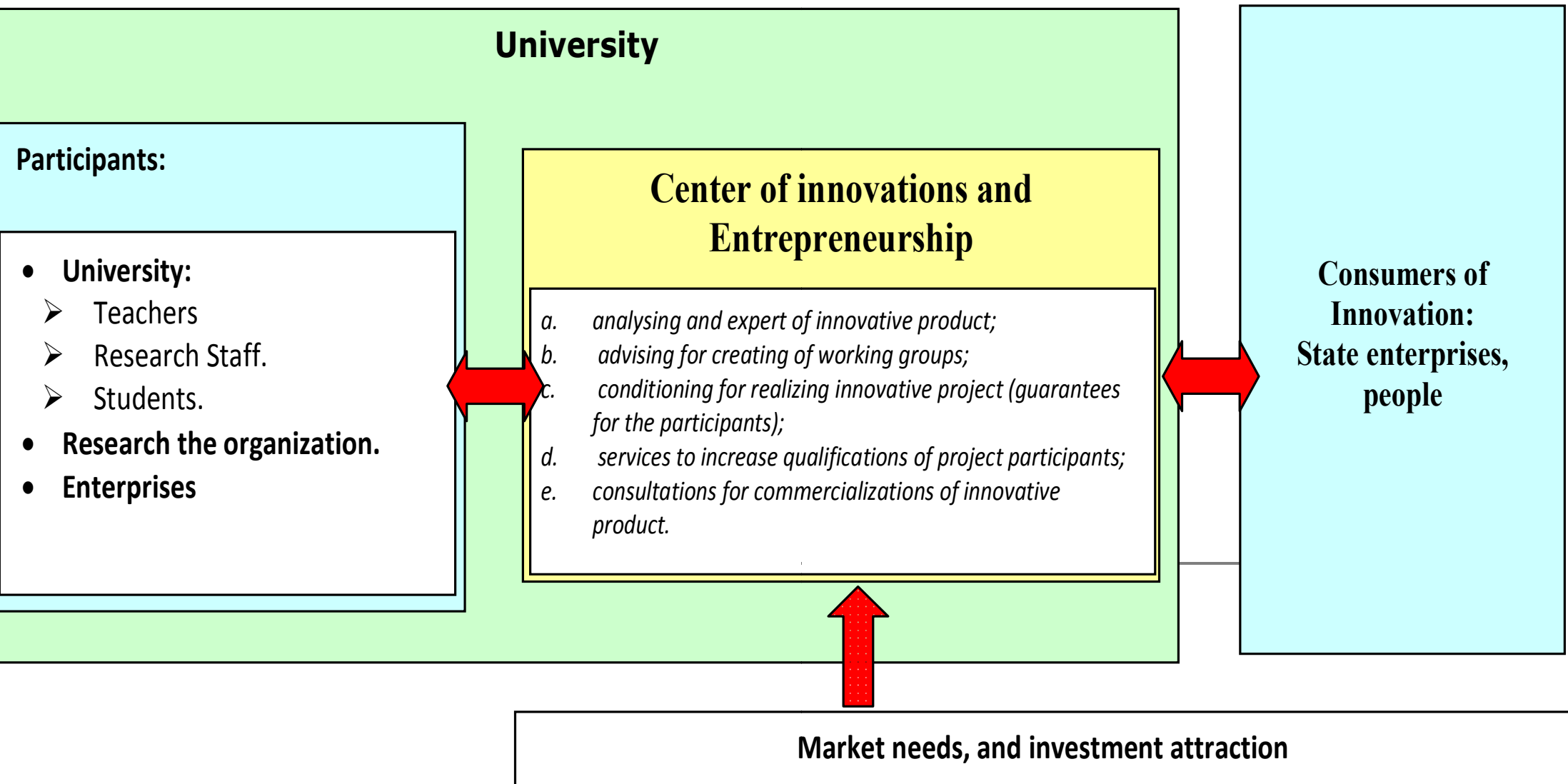
Cooperation based on:  
Mutually advantageous of interests.  
Equality of rights.  
Transparency of process of decision making.  
Independance of parties.  
Realization of the one business project.  
Broadening of spectra of entrepreneurship activities in the BI.  
Cooperation of BIs.

Client

Independent busines partner

# IFNTUOG





---

# ONPU

TEMPUS MEETING, 9-12 DECEMBER, OXFORD, UNITED KINGDOM NATIONAL EDUCATION  
FRAMEWORK FOR ENHANCING IT STUDENTS' INNOVATION AND ENTREPRENEURSHIP